

**PROUD AMERICAN MANUFACTURER**

**ACAT**

TEL. 81 8354 8910

[www.acatmexicana.com](http://www.acatmexicana.com)

Scotchman

Scotchman  
MADE IN U.S.A.

# Scotchman®

Metal Fabricating Solutions

*Ironworkers | Cold Saws | Automatic Sawing Systems | Hydraulic Press | Pipe Notchers | Measuring Devices*

2023



# Ironworker *Optional Tooling*

IRONWORKERS



6" Brake (A)



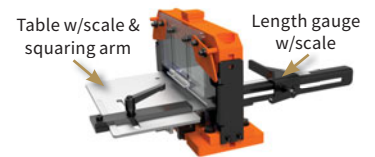
8" Brake (B)



12" Brake (C)



24" Brake (D)



Brake Options (Z)  
(sold separately)



Open End Brake (E)



Pipe Notcher (F)



Rectangle Notcher (G)



90° V-Notcher (H)



Square Tube Shear (I)



Rod Shear (J)



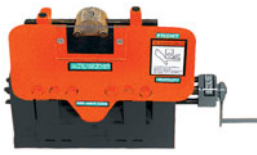
Unistrut Shear (K)



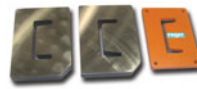
Weld Coupon Bender (L)



Picket Tool (M)



Channel Shear (N)



Channel Shear Blades (O)  
(DO85 only)



6" x 6" Die Holder (P)



Offset Die Holder (Q)



Urethane Stripper (R)



Hydraulic Hold Down (S)



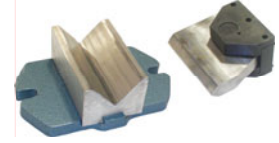
4" Angle Iron Miter Guide (T)



6" Angle Iron Miter Guide (U)



Optional Punch for Notcher End (V)  
(DO85 only)



Open End Brake for Notcher End (W)  
(DO85 only)



30" Material Stop (X)



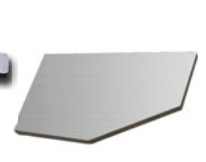
48" Back Gauge (Y)



Shear Table w/ Miter Fence (AA)



Punch Gauging Table w/ Fence & Scale (BB)



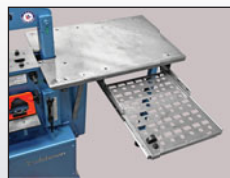
Unequal Leg Blades for Angle Shear (CC)  
66°, 70°, 74°, or 80°



Multi-Loc Punch Gauging Extension: 36" & 85" (DD)



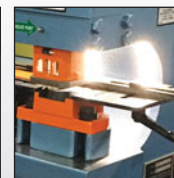
Punch Table Extension (EE)



Tool table extension with punch & die drawer (FF)



Laser Light (GG)



LED Lights (HH)



LG Measuring Device (II)  
(add'l. tool info see page 44)



24" x 5' conveyor with angle iron support (JJ)  
← (attached to DO 70)  
→ (attached to 5014-ET)



# Ironworker *Optional Tooling*

IRONWORKERS

		PF 45	50514-EC	5014-ET	6509	DO70	DO85	F185	9012	DO95	12012	DO120	DO135	DO150
A	6" Brake	●	●	●										
B	8" Brake	●	●	●										
C	12" Brake	●	●	●	●	●	●	●	●	●	●	●	●	●
D	24" Brake				●	●	●	●	●	●	●	●	●	●
E	Open End Brake	●	●	●	●	●	●	●	●	●	●	●	●	●
F	Pipe Notcher	●	●	●	●	●	●	●	●	●	●	●	●	●
G	Rectangle Notcher	●			●				●		●			
H	90° V-Notcher	●	●	●	●	●	●	●	●	●	●	●	●	●
I	Square Tube Shear	●	●	●	●	●	●	●	●	●	●	●	●	●
J	Rod Shear	●	●	●	●	●			●	●	●	●	●	●
K	Unistrut Shear	●	●	●	●	●	●	●	●	●	●	●	●	●
L	Weld Coupon Bender	●	●	●	●	●	●	●	●	●	●	●	●	●
M	Picket Tool	●	●	●	●	●	●	●	●	●	●	●	●	●
N	Channel Shear				●	●		●	●	●	●	●	●	●
O	Channel Shear Blades						●							
P	6"x 6" Die Holder				●	●	●	●	●	●	●	●	●	●
Q	Offset Die Holder				●	●	●	●	●	●	●	●	●	●
R	Urethane Stripper				●	●	●	●	●	●	●	●	●	●
S	Hydraulic Hold Down				●			●	●		●	●	●	●
T	4" Angle Iron Miter Guide		●	●										
U	6" Angle Iron Miter Guide				●	●		●	●	●	●	●	●	●
V	Optional Punch for Notcher End						●							
W	Open End Brake for Notcher End						●							
X	30" Material Stop	●												
Y	48" Back Gauge		●	●	●	●	●	●	●	●	●	●	●	●
Z	Brake Table w/ scale & squaring arm 12"	●	●	●	●	●	●	●	●	●	●	●	●	●
Z	Brake Table w/ scale & squaring arm 24"				●	●	●	●	●	●	●	●	●	●
Z	Brake Length Gauge w/ scale 8"	●	●	●										
Z	Brake Length Gauge w/ scale 12"	●	●	●	●	●			●	●	●	●	●	●
Z	Brake Length Gauge w/ scale 24"				●	●			●	●	●	●	●	●
AA	Shear Table w/ Miter Fence		●	●										
BB	Punch Gauging Table w/ Fence & Scale		●	●										
CC	Unequal Leg Blades for Angle Shear				●	●			●	●	●	●	●	●
DD	Multi-Loc Punch Gauging Extension: 36" & 85"				●	●	●	●	●	●	●	●	●	●
EE	Punch Table Extension				●	●	●	●	●	●	●	●	●	●
FF	Tool table extension with punch & die drawer		●	●	●	●			●	●	●	●	●	●
GG	Laser Light (Shear)		●	●	●	●			●	●	●	●	●	●
HH	LED Lights	● (P)	● (P, S, N)	● (P&S)	● (P&S)	● (P&S)	● (P&S)	● (P&S)	● (P&S)	● (P&S)	● (P&S)	● (P&S)	● (P&S)	● (P&S)
II	LG Measuring Device		●	●	●	●			●	●	●	●	●	●
JJ	24" x 5' Conveyor w/ angle iron support		●	●	●	●	●	●	●	●	●	●	●	●
	Jog Control (Not Pictured)		●	●	Std.	Std.	Std.	Std.	Std.	Std.	Std.	Std.	Std.	Std.

## CUSTOMIZED TOOLING FOR A CUSTOM SOLUTION.

IRONWORKERS

### SOMETIMES, A UNIQUE APPLICATION REQUIRES A CUSTOM-BUILT SOLUTION.

If you need something beyond the standard tooling we offer, our team of engineers is equipped to design and build a tailored solution built to your specifications.

From our plant in Philip, South Dakota, each step of this process from design and development to completion is done in-house.

We thoroughly test each tool to verify performance and ensure value for your investment. With quality manufactured into every tool, we assure that our tools will stand up to the tough demands of your applications.



### Examples of Special Applications We've Built Tooling For



Send us your prints & we'll get to work designing a custom tool for your specific needs.





# In-Stock *Punches & Dies*

IRONWORKERS

#20 & #40 Rounds	
1/8	11/16
5/32	23/32
3/16	3/4
13/64	25/32
7/32	13/16
1/4	27/32
17/64	7/8
9/32	29/32
5/16	15/16
11/32	31/32
3/8	1
13/32	1-1/32
7/16	1-1/16
15/32	1-3/32
1/2	1-1/8
17/32	1-5/32
9/16	1-3/16
19/32	1-7/32
5/8	1-1/4
21/32	

Round Metric	
5 mm	19 mm
6 mm	20 mm
7 mm	21 mm
8 mm	22 mm
9 mm	23 mm
10 mm	24 mm
11 mm	25 mm
12 mm	26 mm
13 mm	27 mm
14 mm	28 mm
15 mm	29 mm
16 mm	30 mm
17 mm	31 mm
18 mm	32 mm

#49 Round Punches	
1-5/8	1-7/8
1-11/16	1-15/16
1-3/4	2
1-13/16	

Round Offset Dies
9/32
5/16
11/32
3/8
13/32
7/16
15/32
1/2
17/32
9/16
19/32

#45 Round Punches
1-9/32
1-5/16
1-11/32
1-3/8
1-13/32
1-7/16
1-15/32
1-1/2
1-17/32
1-9/16

Split Ring Round
1-5/8
1-3/4
2
2-1/4
2-1/2
2-3/4
3

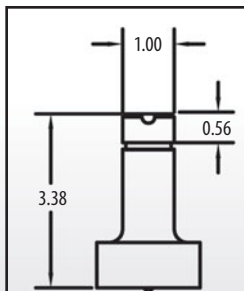
Ovals	
1/4 x 1/2	3/4 x 1
9/32 x 1/2	25/32 x 1
1/4 x 3/4	13/16 x 1
9/32 x 3/4	7/8 x 1
5/16 x 3/4	15/16 x 1
11/32 x 3/4	1/4 x 1-1/4
3/8 x 3/4	9/32 x 1-1/4
13/32 x 3/4	5/16 x 1-1/4
7/16 x 3/4	11/32 x 1-1/4
15/32 x 3/4	3/8 x 1-1/4
1/2 x 3/4	13/32 x 1-1/4
17/32 x 3/4	7/16 x 1-1/4
9/16 x 3/4	15/32 x 1-1/4
19/32 x 3/4	1/2 x 1-1/4
5/8 x 3/4	17/32 x 1-1/4
1/4 x 1	9/16 x 1-1/4
9/32 x 1	19/32 x 1-1/4
5/16 x 1	5/8 x 1-1/4
11/32 x 1	21/32 x 1-1/4
3/8 x 1	11/16 x 1-1/4
13/32 x 1	23/32 x 1-1/4
7/16 x 1	3/4 x 1-1/4
15/32 x 1	25/32 x 1-1/4
1/2 x 1	13/16 x 1-1/4
17/32 x 1	7/8 x 1-1/4
9/16 x 1	15/16 x 1-1/4
19/32 x 1	7/16 x 1-1/2
5/8 x 1	9/16 x 1-1/2
21/32 x 1	11/16 x 1-1/2
11/16 x 1	13/16 x 1-1/2
23/32 x 1	15/16 x 1-1/2

Squares
1/4
9/32
5/16
11/32
3/8
13/32
7/16
15/32
1/2
17/32
9/16
19/32
5/8
21/32
11/16
23/32
3/4
25/32
13/16
27/32
7/8
29/32
15/16
31/32
1
1-1/32

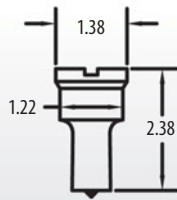
Hexagon
7/16
1/2
11/16
3/4

Corner Turning
1/2
3/4

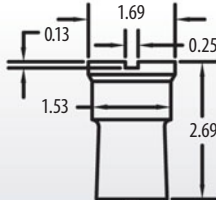
Trimming & Cut Off
3/4
1



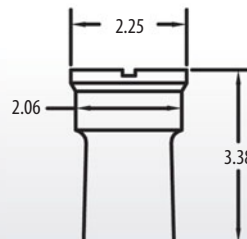
**#20 Punch**  
1/8" Thru 1-1/4"  
5 mm Thru 32 mm



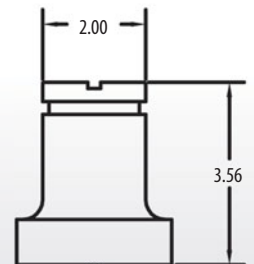
**#40 Punch**  
1/8" Thru 1-1/4"  
5 mm Thru 32 mm



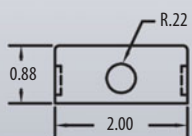
**#45 Punch**  
1-9/32" Thru 1-9/16"



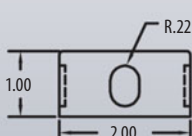
**#49 Punch**  
12012, D0120, DO135,  
DO150 Machine Only  
1-5/8" Thru 2"



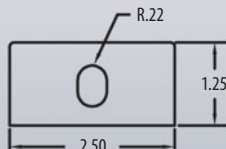
**Split Ring Punch**  
1-5/8" Thru 3"



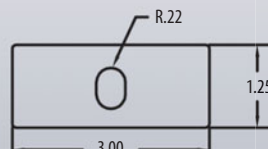
**#20 Die**



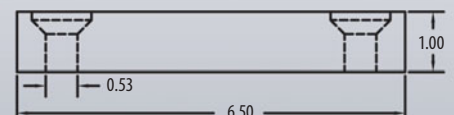
**#82 Die**



**#86 Die**



**3" Die**



**6 x 6 Die**

MACHINES  
THAT WORK  
AS HARD  
AS YOU DO.

**Scotchman**<sup>TM</sup>

Metal Fabricating Solutions

Sales partner in México:

**ACAT**

ACAT Mexicana  
Ave. Regio Parque #200 Regio Parque Industrial  
Apodaca , Nuevo León, México CP. 66633

✉ [acat@acatmexicana.com](mailto:acat@acatmexicana.com)

☎ TEL. 81 8354 8910



[www.acatmexicana.com](http://www.acatmexicana.com)